

27th EUROPEAN FORESTERS' ORIENTEERING CHAMPIONSHIP



MADONA, LATVIA
2021 August 01-06



MADONA



1.EFOL
1994.
Strenči



25.EFOL
2018.
Sigulda



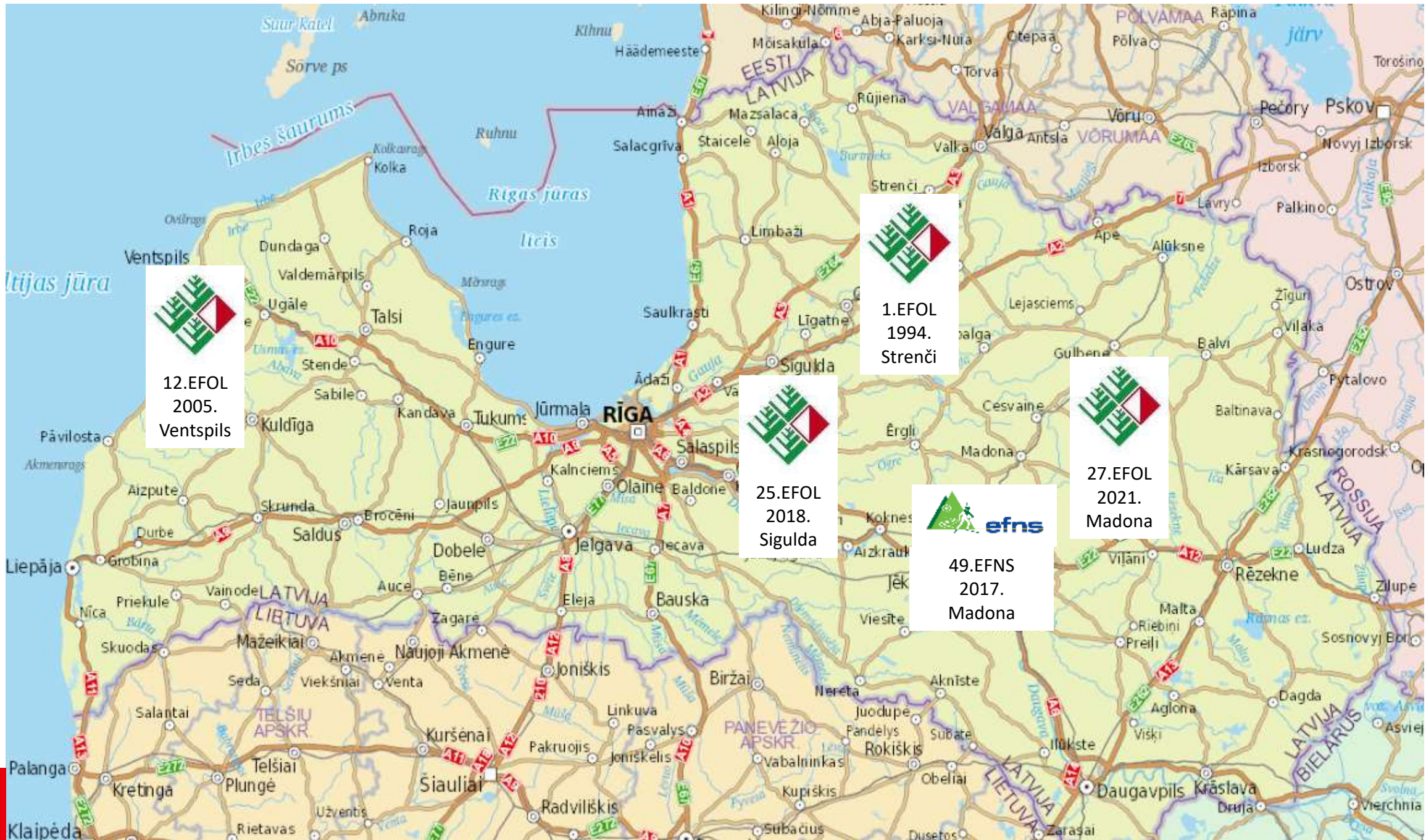
27.EFOL
2021.
Madona



49.EFNS
2017.
Madona



12.EFOL
2005.
Ventspils





Organizers/Patrons

- Foresters union «Meža sports»
- Madona municipality
- Latvian Orienteering Federation





EFOL 2018



NOKIAN TYRES WORLD ORIENTEERING CHAMPIONSHIPS LATVIA 2018
RIGA | SIGULDA

Latvia 100

AUGUST 4 - 11

WOC2018 **WTOC2018** **O-WEEK** **EFOL2018**

EFOL 2018
European Foresters Orienteering Championships

07.08.2018 09.08.2018 10.08.2018

LIVE SERVICES

- ▶ LIVE RESULTS
- ▶ STARTS
- ▶ SPLIT RESULTS
- ▶ SPLIT TIMES
- ▶ SPLIT SCHEDULE
- ▶ SPLIT RESULTS
- ▶ SPLIT TIMES
- ▶ SPLIT SCHEDULE
- ▶ SPLIT RESULTS
- ▶ SPLIT TIMES
- ▶ SPLIT SCHEDULE

IMPORTANT FOR EFOL

- ▶ FORESTRY MORNING PRESENTATIONS
- ▶ EFOL 2018'S PROGRAM
- ▶ EFOL 2018'S BULLETIN
- ▶ EFOL 2018'S PROGRAM

NEWS

09.AUG. SWITZERLAND AND NORWAY WORLD CHAMPIONS IN THE RELAY

08.AUG. ADRENALINE-FILLED RELAY COMPETITION'S UP NEXT WILL LATVIAN TEAMS REACH A HISTORICAL SUCCESS?

08.AUG. WHY FAVORITES LEFT WITHOUT GOLD? MIDDLE DISTANCE ANALYSIS

08.AUG. WAP ATTACKS AND UNEXPECTED NEW MIDDLE DISTANCE CHAMPIONS!

07.AUG. SQUIPPER AND WINBERG WORLD CHAMPIONS IN MIDDLE DISTANCE

SIGULDA



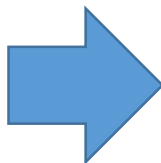
Preliminary Programme for EFOL 2021, MADONA, Latvia



Week 31st

(first week of August)

*Thursday
or
Friday*



	Approx. time	EFOL 2021
Day 1 th	13.00-19.00	Arrival, Event office open
	13.00	Model
Day 2 th	9.00-19.00	Arrival, Event office open
	13.00	Model
	18.30	Team leaders meeting
Day 3 th	13.00	Sprint
	17.00-18.30	Opening ceremony
Day 4 th	10.00-16.00	Foresters middle
	19.00	Banquet, awarding
Day 5 th	9.00-14.00	Excursions
	18.00	EFOL annual meeting
Day 6 th	12.00	Relay
	14.30	Closing ceremony, awarding relay

Saturday, August 7 th	Latvian Championship long	Līgatne
Sunday, August 8 th	Mežmalu cup relay	Ērgļi

General Information

- Event Centre
 - Building: **Smeceres sils, Sports and Recreation complex**
 - Staff will be available at the EFOL Information Desk to answer any questions and hand out the team packages. These should be collected preferably by the team leader. All teams must pay any remaining charges before they can collect their packages.
- Identification. Please always wear your ID-card (badge). The badge gives you access to the competitions, seminar, excursion, opening and closing ceremonies.

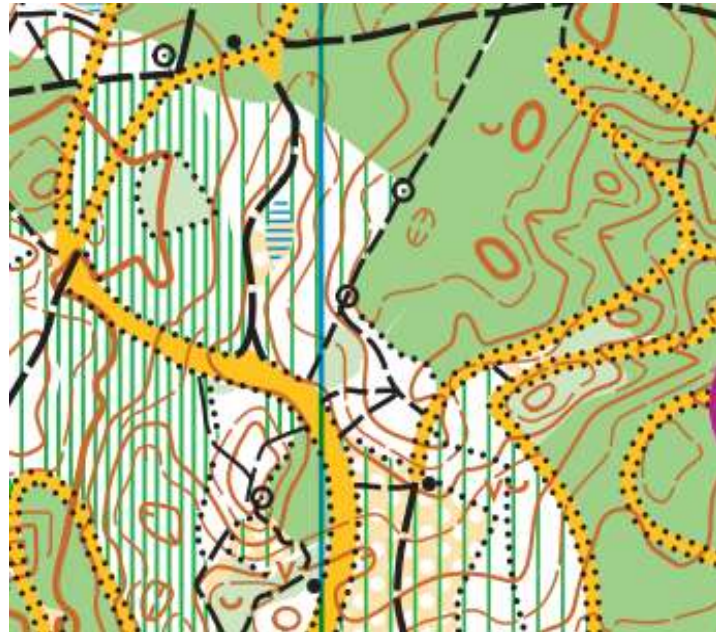


SMECERES
SILS

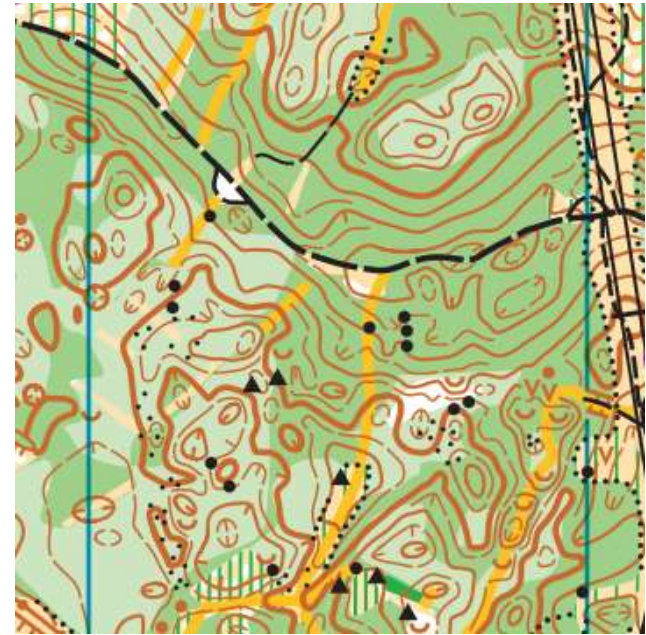
Accommodation:

- Hotel Madona 70 beds
- Hotel Ezernieki 90 beds
- FRS Kalsnava «Vētraine» 32 beds
- Camping Smeceris sils





2021



<https://lof.lv/lof-karsu-registrs>

EFOL 2021 participation fees



		Born 2007 –
Competition fees	53 €	0 €
Registration for a single competition Open class	13 €	0 €
Rental badge SI	5 €	2 €
Excursion A, B, C	25 -60€	25 -60€
Banquet	25 €	19 €
Forest seminar	0 €	0 €

**Applications must be submitted by 01.07.2021.
Payments must be submitted by 15.07.2021.**

COURSES «FORESTERS MIDDLE»



Men	km	Women	km	Year of birth
M12	2,5 - 2,8	W12	2,0 - 2,5	
M14	4,5	W14	3,0 - 4,0	
M16	5,0	W16	3,5 - 4,5	
M18	6,0	W18	4,5 - 5,0	
M20	6.5	W20	5,0 - 5,5	
M21	7,0	W21	3,5 - 4,5	
M35	6,0	W35	4,0	
M40	6,0	W40	3,5 - 4,0	
M45	5,5	W45	3,5 - 4,0	
M50	5,5	W50	3,5 - 4,0	
M55	5,0	W55	4,5	
M60	4,5	W60	4,0	
M65	4,0	W65	3,5	
M70	3,0	W70	2,5	
M75	2,5	W75	2,0	
Open1	2,5			
Open2	5,5			

Lengths of courses will be specified

COURSES RELAY



Men	km	Women	km	Number of legs
M12/M14	2,5	W12/W14	2,0	2
M16/M18	4.5	W16/W18	4,0	2
M21	5,5 - 6,0	W21	3,5 - 4,5	3
M120	5,0	W120	4,0	3
M145	4.5	W145	3,5 - 4,0	3
M170	4.0	W170	3.5	3
M195	3.5	W195	3.0	3

Age groups for women and men 120, 145, 170 and 195 represents sum of ages for 3 runners, where youngest runner should be born in 1986 or earlier.

Competition groups will be adapted to the number of participants in youth groups

Lengths of courses will be specified

Sprint, Madonna





Time keeping

During the event, the **SPORTident** timekeeping system will be used. In case the SI box does not beep or flash, competitors must punch on the map with the traditional pin punches mounted on all controls.

The team leaders have to return the rented SI-card to the Information Desk after the last race. It is a runner's responsibility to bring the correct SI card and ensure it is working. Hired SI cards must be returned at the finish on the last day of the competition. The cost to replace a missing SI card is 30 euro.



27th EUROPEAN FORESTER'S ORIENTEERING CHAMPIONSHIP

